



Product code: 5042

Amdal

With its natural simplicity Amdal shows remarkable durability, comfort and versatility in use. Its 30 colours are subdued and attractive, and enhance the softness and tactility of the fabric. New colours launched 2018

Fargepalett



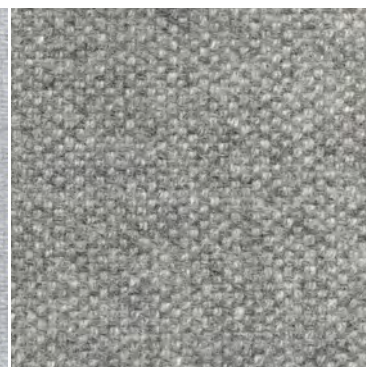
5042-140-100



5042-140-110



5042-140-125



5042-140-130



5042-140-200



5042-140-365



5042-140-625



5042-140-122



5042-140-210



5042-140-325



5042-140-350



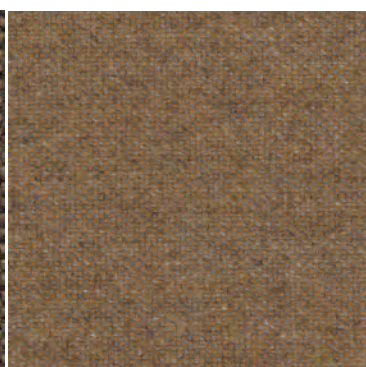
5042-140-360



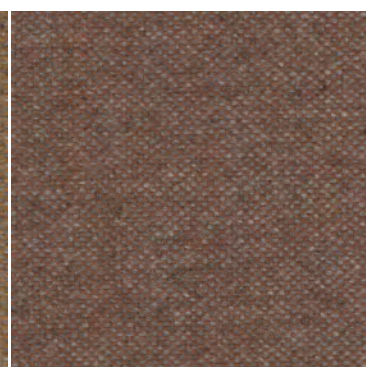
5042-140-370



5042-140-380



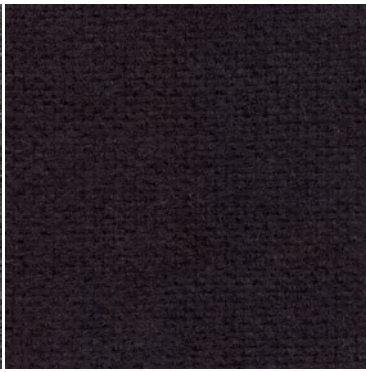
5042-140-480



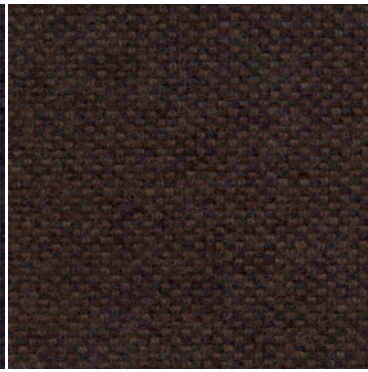
5042-140-580



5042-140-180



5042-140-190



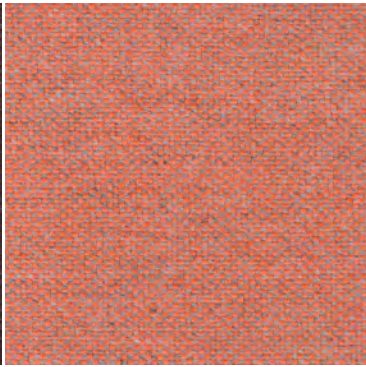
5042-140-280



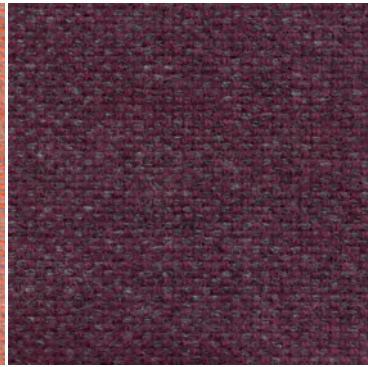
5042-140-382



5042-140-675



5042-140-545



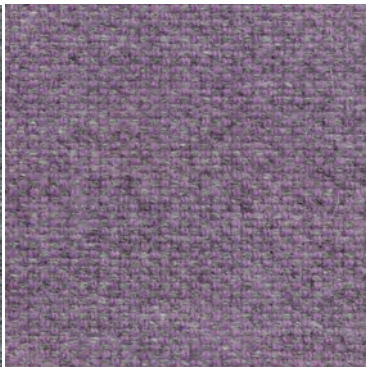
5042-140-680



5042-140-155



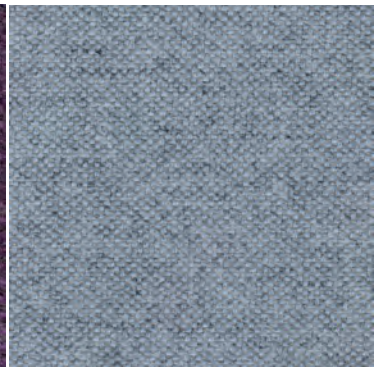
5042-140-165



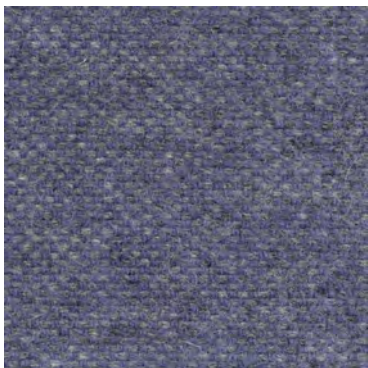
5042-140-700



5042-140-701



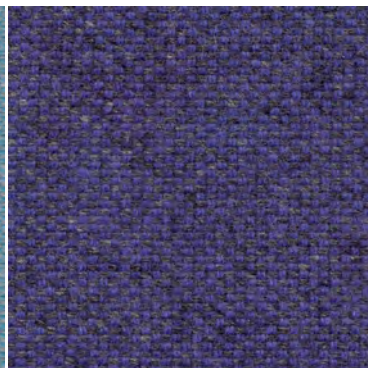
5042-140-725



5042-140-730



5042-140-745



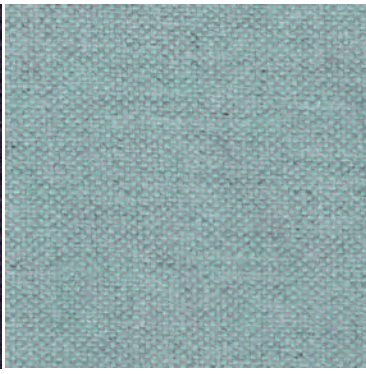
5042-140-750



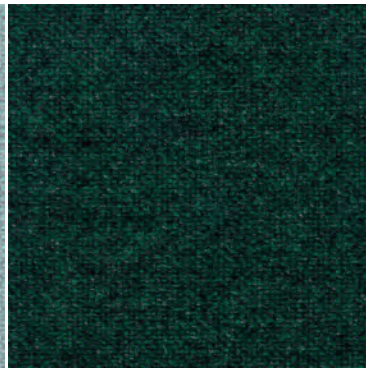
5042-140-760



5042-140-780



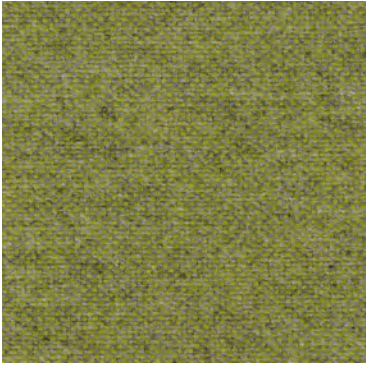
5042-140-825



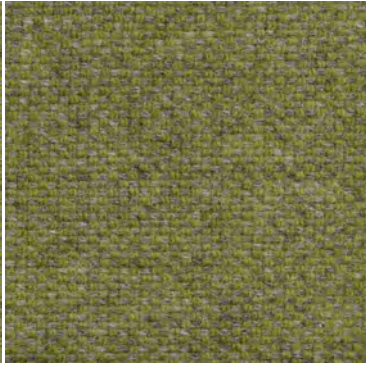
5042-140-885



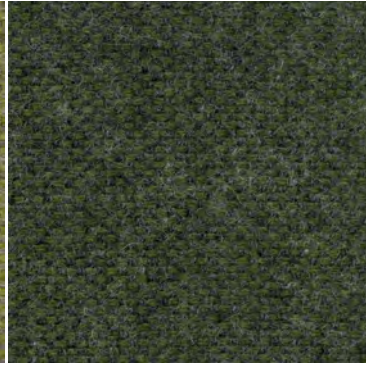
5042-140-920



5042-140-935



5042-140-950



5042-140-980



5042-140-425



5042-140-915

Specifications

Designer	GU Design Team / Per Bjørnsen
Material	70% Virgin Wool / 30% Viscose
Weight	680 g/m
Width	140 cm
Abrasion resistance	100.000 rubs on Martindale, test method ISO 12947-2: 1999
Fastness to light	5-7 (scale 1-8)
Resistance to rubbing dry state	4 (scale 1-5)
Resistance to rubbing wet state	4 (scale 1-5)
Flame Resistance	EN ISO 1021: Part 1 and 2 BS 5852 part 2 (crib 5)
Cleaning	Dry cleaning (P)
Wheel Mark	Yes
EU-flower	Yes