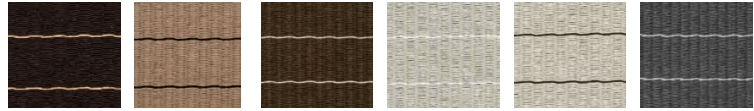
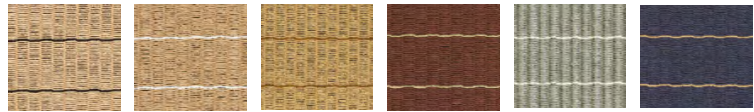


WOVEN PAPER YARN CARPETS



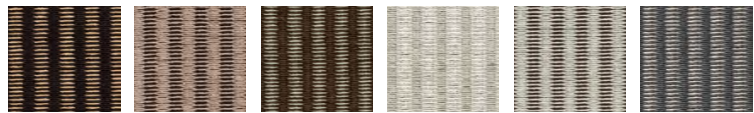
12495 LINE BLACK - NATURAL
124199 LINE ANTIQUE - BLACK
1242015 LINE ONYX - STONE
124151 LINE STONE - WHITE
124159 LINE STONE - BLACK
1244015 LINE GRAPHITE - STONE



12459 LINE NATURAL - BLACK
12451 LINE NATURAL - WHITE
12453 LINE NATURAL - BROWN
12405 LINE REDDISH BROWN - NATURAL
124215 LINE GREY - STONE
12445 LINE DARK BLUE - NATURAL



1241532 LINE STONE - NUTRIA
1243240 LINE NUTRIA - GRAPHITE



11695 RAILWAY BLACK - NATURAL
116199 RAILWAY ANTIQUE - BLACK
1162015 RAILWAY ONYX - STONE
116151 RAILWAY STONE - WHITE
116159 RAILWAY STONE - BLACK
1164015 RAILWAY GRAPHITE - STONE



11659 RAILWAY NATURAL - BLACK
11651 RAILWAY NATURAL - WHITE
11653 RAILWAY NATURAL - BROWN
116215 RAILWAY GREY - STONE
11645 RAILWAY DARK BLUE - NATURAL

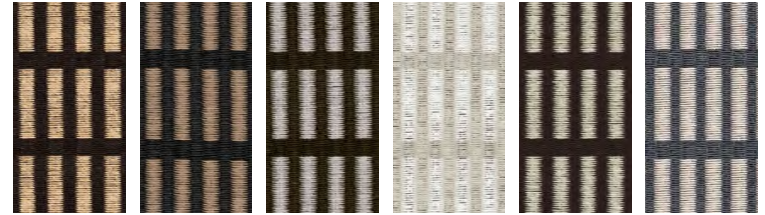


1164530 RAILWAY WILLOW BROWN - LIGHT GREY
1164509 RAILWAY WILLOW BROWN - BLACK



1161532 RAILWAY STONE - NUTRIA
1163240 RAILWAY NUTRIA - GRAPHITE

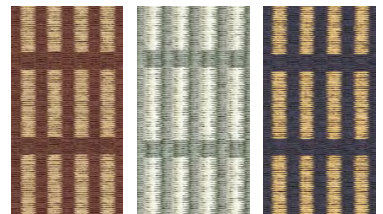
WOVEN PAPER YARN CARPETS



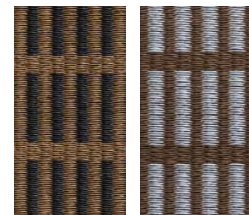
11895 NEW YORK BLACK - NATURAL
11899 NEW YORK BLACK - ANTIQUE
1182015 NEW YORK ONYX - STONE
118151 NEW YORK STONE - WHITE
118915 NEW YORK BLACK - STONE
1184015 NEW YORK GRAPHITE - STONE



11859 NEW YORK NATURAL - BLACK
11851 NEW YORK NATURAL - WHITE



11805 NEW YORK REDDISH BROWN - NATURAL
118215 NEW YORK GREY - STONE
11845 NEW YORK DARK BLUE - NATURAL



1184509 NEW YORK WILLOW BROWN - BLACK
1184530 NEW YORK WILLOW BROWN - LIGHT GREY

FINISHING OPTIONS

- Sewn edges (C)
- Sewn edges and fringes (H)
- Sewn edges and backing (S)
- Sewn edges, backing and fringes (F)
- Narrow edging and backing (P)
- Wide edging and backing (T)
- Wide edging (K)
- Sewn edges and wide edging ends (W)

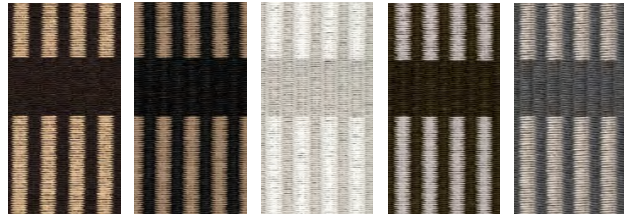
COLOUR OPTIONS

The carpets can also be personalized. Colours can be matched to suit individual preferences.

WOVEN PAPER YARN CARPETS



11795 CITY BLACK - NATURAL
 117151 CITY STONE - WHITE
 117159 CITY STONE - BLACK
 1174015 CITY GRAPHITE - STONE
 11759 CITY NATURAL - BLACK



11595 CUT STRIPE BLACK - NATURAL
 115919 CUT STRIPE BLACK - ANTIQUE
 115151 CUT STRIPE STONE - WHITE
 115915 CUT STRIPE BLACK - STONE
 1154015 CUT STRIPE GRAPHITE - STONE

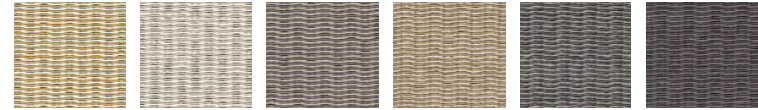


1261545 WILLOW STONE - WILLOW BROWN
 1260545 WILLOW NATURAL - WILLOW BROWN
 1264505 WILLOW WILLOW BROWN - NATURAL
 1260945 WILLOW BLACK - WILLOW BROWN

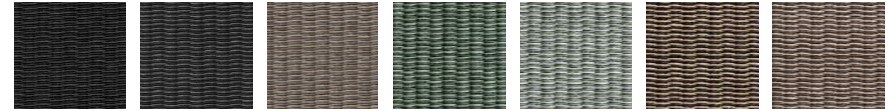
Woodnotes facts

100% of our paper yarn textile products are manufactured in Finland. The production chain of key paper yarn textiles - from paper yarn spinning to textile weaving, sewing, finishing work and packaged product - takes place centrally at nearby production sites in Kauhajärvi and Lapua: the distance between the weaving mill and the sewing shop is 26 km. The environmental impact of transport is thus kept to a minimum.

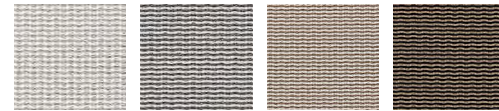
WOVEN PAPER YARN CARPETS



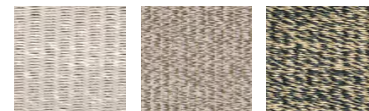
13251 COAST NATURAL - WHITE
 132151 COAST STONE - WHITE
 132215 COAST GREY - STONE
 1321519 COAST STONE - ANTIQUE
 1324030 COAST GRAPHITE - LIGHT GREY
 132192 COAST DARK VIOLET - GREY



132920 COAST BLACK - ONYX
 1324009 COAST GRAPHITE - BLACK
 1323240 COAST NUTRIA - GRAPHITE
 1322720 COAST ASPEN GREEN - ONYX
 1322730 COAST ASPEN GREEN - LIGHT GREY
 1323209 COAST NUTRIA - BLACK
 1324530 COAST WILLOW BROWN - LIGHT GREY



1441501 ROAD STONE - WHITE
 1440215 ROAD GREY - STONE
 1441915 ROAD ANTIQUE - STONE
 1440932 ROAD BLACK - NUTRIA



130151 LIVING STONE - WHITE
 1301532 LIVING STONE - NUTRIA
 13095 LIVING BLACK - NATURAL



1311532 FIELD STONE - NUTRIA
 131159 FIELD STONE - BLACK
 1313215 FIELD NUTRIA - STONE



125151 SUMMER RAIN STONE - WHITE
 1394009 MIDSUMMER GRAPHITE - BLACK

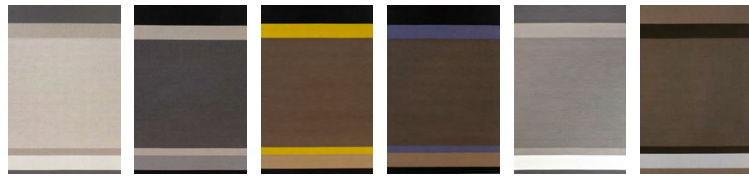
FINISHING OPTIONS

- Sewn edges (C)
- Sewn edges and fringes (H)
- Sewn edges and backing (S)
- Sewn edges, backing and fringes (F)
- Narrow edging and backing (P)
- Wide edging and backing (T)
- Wide edging (K)
- Sewn edges and wide edging ends (W)

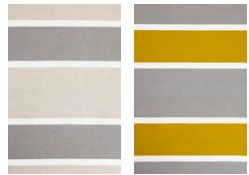
COLOUR OPTIONS

The carpets can also be personalized. Colours can be matched to suit individual preferences.

WOVEN PAPER YARN CARPETS



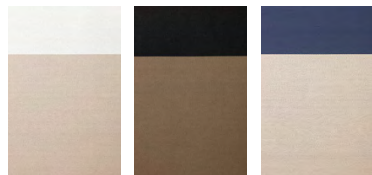
1331501 PANORAMA STONE - WHITE
 1330930 PANORAMA BLACK - LIGHT GREY
 1330905 PANORAMA BLACK - NATURAL
 1330919 PANORAMA BLACK - ANTIQUE
 1334030 PANORAMA GRAPHITE - LIGHT GREY
 1333220 PANORAMA NUTRIA - ONYX



1361530 BRIDGE STONE - LIGHT GREY
 1363034 BRIDGE LIGHT GREY - BRASS



1403001 FOURWAYS LIGHT GREY - WHITE
 1404015 FOURWAYS GRAPHITE - STONE
 1402432 FOURWAYS BRASS - NUTRIA
 1404104 FOURWAYS TURQUOISE - DARK BLUE
 1402009 FOURWAYS ONYX - BLACK



1381501 BEACH STONE - WHITE
 1383209 BEACH NUTRIA - BLACK
 1381544 BEACH STONE - INTENSIVE BLUE



1420015 BIG STRIPE BLACK - STONE
 1420905 BIG STRIPE BLACK - NATURAL

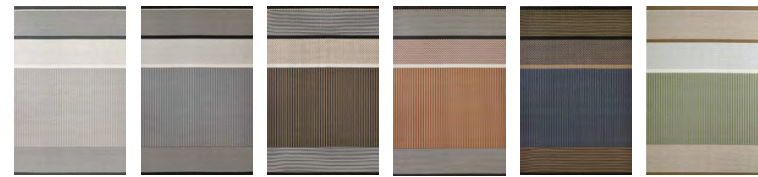
FINISHING OPTIONS

- Sewn edges (O)
- Sewn edges and fringes (H)
- Sewn edges and backing (S)
- Sewn edges, backing and fringes (F)
- Narrow edging and backing (P)
- Wide edging and backing (T)
- Wide edging (K)
- Sewn edges and wide edging ends (W)

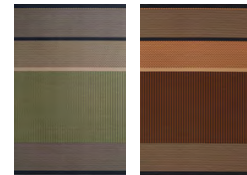
COLOUR OPTIONS

The carpets can also be personalized. Colours can be matched to suit individual preferences.

WOVEN PAPER YARN CARPETS



1431501 SAN FRANCISCO STONE - WHITE
 1433015 SAN FRANCISCO LIGHT GREY - STONE
 1433215 SAN FRANCISCO NUTRIA - STONE
 1430015 SAN FRANCISCO REDDISH BROWN - STONE
 1430432 SAN FRANCISCO DARK BLUE - NUTRIA
 1432715 SAN FRANCISCO ASPEN GREEN - STONE



1432732 SAN FRANCISCO ASPEN GREEN - NUTRIA
 1430305 SAN FRANCISCO BROWN - NATURAL



1430115 SAN FRANCISCO WHITE - STONE
 1430215 SAN FRANCISCO GREY - STONE
 1430932 SAN FRANCISCO BLACK - NUTRIA
 1430905 SAN FRANCISCO BLACK - NATURAL
 1430415 SAN FRANCISCO DARK BLUE - STONE
 1430501 SAN FRANCISCO NATURAL - WHITE



1350115 HORIZON WHITE - STONE
 1350205 HORIZON GREY - NATURAL
 1351522 HORIZON STONE - YELLOW
 1350900 HORIZON BLACK - REDDISH BROWN



1370230 AVENUE GREY - LIGHT GREY
 1371522 AVENUE STONE - YELLOW
 1373230 AVENUE NUTRIA - LIGHT GREY
 1373040 AVENUE LIGHT GREY - GRAPHITE
 1373033 AVENUE LIGHT GREY - GREY PURPLE

WOVEN PAPER YARN CARPETS PLAY / UNICOLOUR COLOUR CHART



- FINISHING OPTIONS**
- Sewn edges (C)
 - Sewn edges and fringes (H)
 - Sewn edges and backing (S)
 - Sewn edges, backing and fringes (F)
 - Narrow edging and backing (P)
 - Wide edging and backing (T)
 - Wide edging (I)
 - Sewn edges and wide edging ends (W)

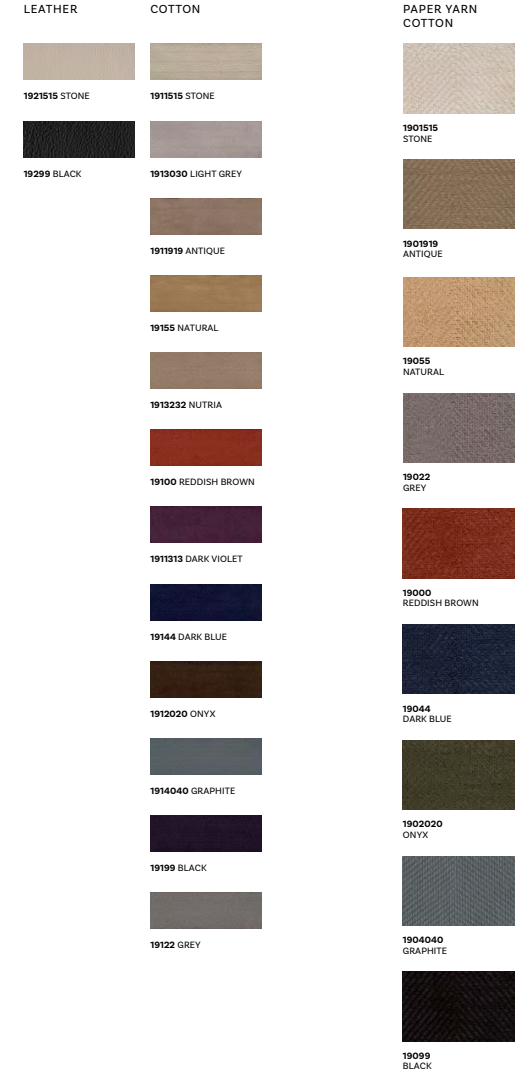
COLOUR OPTIONS
The carpets can also be personalized. Colours can be matched to suit individual preferences.

WOVEN PAPER YARN CARPET EDGING OPTIONS

PAPER YARN COTTON
There are 9 colour options available in paper yarn cotton edging. The material composition is 67 % paper yarn (weft) and 33 % cotton (warp). The border measures 12 cm in total of which 6 cm is in sight. Paper yarn edging has been designed for carpets with reversible use as well as for carpets with backing.

COTTON
There are 12 colour options available in cotton edging. The edging border measures 1 cm in sight. Cotton edging is used for carpets with backing.

LEATHER
There are two colour options available in leather edging. The edging border measures 1.5 cm in sight. Leather edging is used for carpets with backing.



WOVEN PAPER YARN CARPETS

SEWN EDGES (O)



Finishing: type O, sewn edges and turned ends
Designs: all paper yarn carpets (see pages 60-66)
Material: 86 % paper yarn (weft), 14 % cotton (warp)
Weight: approx. 1,90 kg/m²
Thickness: 6 mm
Suggested application: residential and light contract

Carpets are supplied to order. The maximum width is 250 cm and the maximum length 500 cm. Production tolerance ±2%. Carpets are supplied with soil-repellent treatment. The use of non-skid underlay is recommended. Slight weaving curve might occur in carpets without backing.
Design: Ritva Puotila

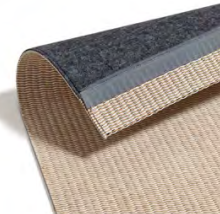
SEWN EDGES AND FRINGES (H)



Finishing: type H, sewn edges and fringes, length of fringes 9 cm
Designs: all paper yarn carpets (see pages 60-66)
Material: 86 % paper yarn (weft), 14 % cotton (warp)
Weight: approx. 1,90 kg/m²
Thickness: 6 mm
Suggested application: residential and light contract

Carpets are designed for reversible use and supplied to order. The maximum width is 250 cm and the maximum length 500 cm. Production tolerance ±2%. Carpets are supplied with soil-repellent treatment. The use of non-skid underlay is recommended. Slight weaving curve might occur in carpets without backing.
Design: Ritva Puotila

SEWN EDGES AND BACKING (S)



Finishing: type S, sewn edges and backing
Designs: all paper yarn carpets (see pages 60-66)
Material: 76 % paper yarn (weft), 13 % cotton (warp), 11% polyester felt (backing)
Backing: 90% recycled polyester, 10 % special low-melt polyester
Weight: approx. 2,20 kg/m² (incl. backing)
Thickness: 6 mm with felt backing
Suggested application: residential and contract

Carpets are supplied to order. The maximum width is 335 cm and the maximum length 1000 cm. Production tolerance ±2%. Carpets are supplied with soil-repellent treatment.
Design: Ritva Puotila

SEWN EDGES, BACKING AND FRINGES (F)

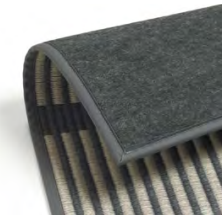


Finishing: type F, sewn edges, backing and fringes, length of fringes 9 cm
Designs: all paper yarn carpets (see pages 60-66)
Material: 76 % paper yarn (weft), 13 % cotton (warp), 11% polyester felt (backing)
Backing: 90% recycled polyester, 10 % special low-melt polyester
Weight: approx. 2,20 kg/m² (incl. backing)
Thickness: 6 mm with felt backing
Suggested application: residential and contract

Carpets are supplied to order. The maximum width is 335 cm and the maximum length 1000 cm. Production tolerance ±2%. Carpets are supplied with soil-repellent treatment.
Design: Ritva Puotila

WOVEN PAPER YARN CARPETS

NARROW EDGING AND BACKING (P)



Finishing: type P, bound around the edges with 1 cm wide cotton border
Designs: all paper yarn carpets (see pages 60-66)
Material: 76 % paper yarn (weft), 13 % cotton (warp), 11% polyester felt (backing)
Backing: 90% recycled polyester, 10 % special low-melt polyester
Weight: approx. 2,20 kg/m² (incl. backing)
Thickness: 6 mm with felt backing
Suggested application: residential and contract

Carpets are supplied to order. The maximum width is 335 cm and the maximum length 1000 cm. Production tolerance ±2%. Carpets are supplied with soil-repellent treatment. Round carpets are also available in this quality.
Design: Ritva Puotila

WIDE EDGING AND BACKING (T)



Finishing: type T, bound around the edges with 6 cm wide paper yarn cotton border
Designs: all paper yarn carpets (see pages 60-66)
Material: 76 % paper yarn (weft), 13 % cotton (warp), 11% polyester felt (backing)
Backing: 90% recycled polyester, 10 % special low-melt polyester
Weight: approx. 2,20 kg/m² (incl. backing)
Thickness: 6 mm with felt backing, 12 mm corners
Suggested application: residential and contract

Carpets are supplied to order. The maximum width is 335 cm and the maximum length 1000 cm. Production tolerance ±2%. Carpets are supplied with soil-repellent treatment.
Design: Ritva Puotila

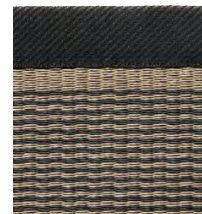
WIDE EDGING (K)



Finishing: type K, bound around the edges with 6 cm wide paper yarn cotton border
Designs: all paper yarn carpets (see pages 60-66)
Material: 86 % paper yarn (weft), 14 % cotton (warp)
Weight: approx. 1,95 kg/m²
Thickness: 6 mm, 12 mm corners
Suggested application: residential and light contract

Carpets with paper yarn cotton edging are designed for reversible use and supplied to order. The maximum width is 335 cm and the maximum length 1000 cm. Production tolerance ±2%. Carpets are supplied with soil-repellent treatment on both sides. The use of nonskid underlay is recommended. Slight weaving curve might occur in carpets without backing.
Design: Ritva Puotila

SEWN EDGES AND WIDE EDGING ENDS (W)



Finishing: type W, sewn edges and wide edging ends with 6 cm wide paper yarn cotton edging
Designs: All paper yarn carpets (see pages 60-66)
Material: 86% paper yarn (weft), 14 % cotton (warp)
Weight: approx. 1,9 kg/m²
Thickness: 6 mm, 12 mm corners
Suggested application: residential and light contract

Carpets with sewn edges and wide edging ends are designed for reversible use and supplied to order. The maximum width is 250 cm and the maximum length 500 cm. Production tolerance ±2%. Carpets are supplied with soil-repellent treatment on both sides. The use of non-skid underlay is recommended. Slight weaving curve might occur in carpets without backing.
Design: Ritva Puotila